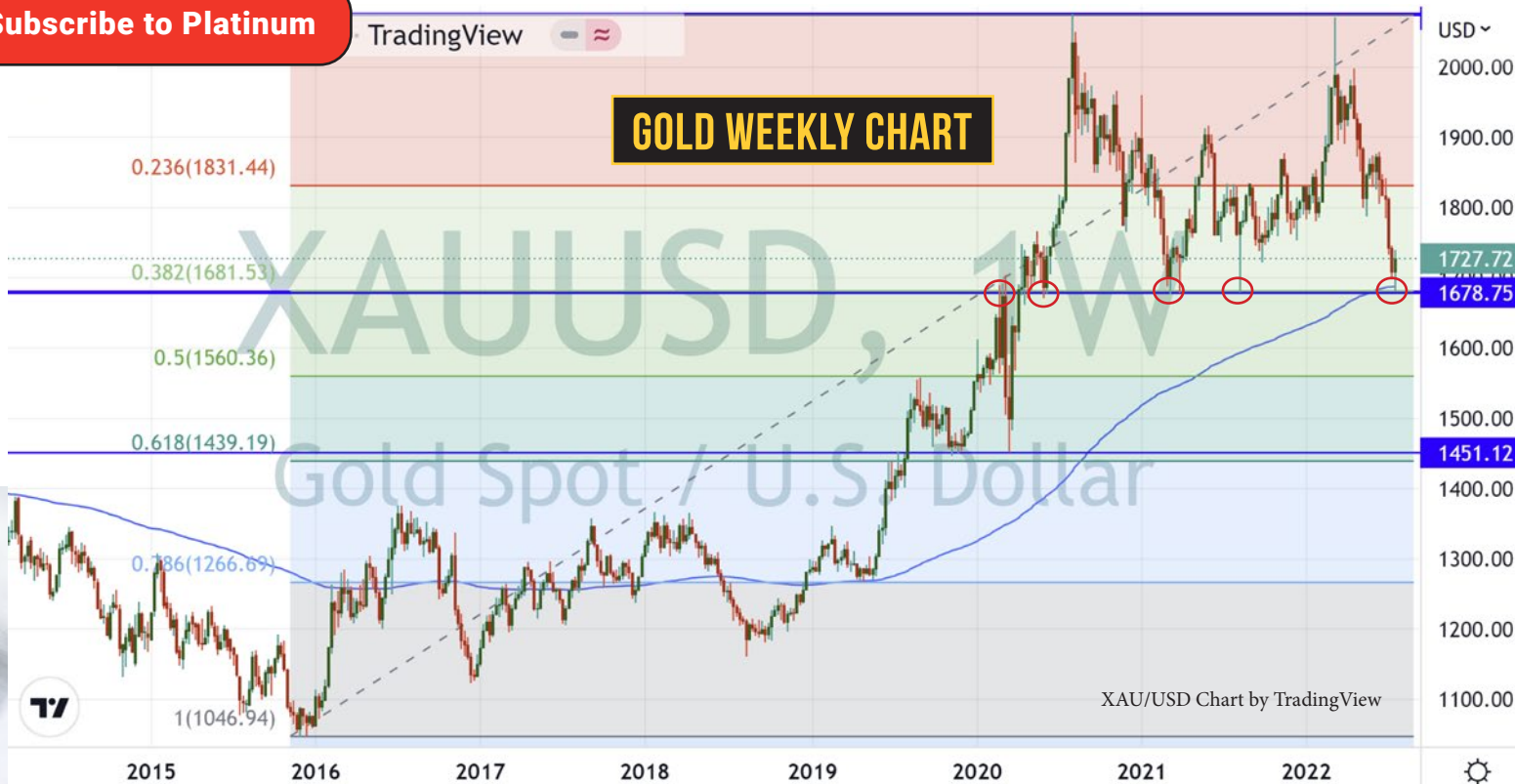




Market Trend News

REPORTING ON THE MARKETS SINCE 1993

Subscribe to Platinum



Has Gold Bottomed?

Last week gold bounced off the major support area of \$1680US/oz again, it bounced off the 38.2% fib retracement from the lows of 2015, and it bounced off the weekly 200 EMA. It all looks positive for gold but then we look at this week's calendar and the Federal Reserve meets this week for an interest rate decision. Is the expected .75% hike already priced into the gold price? Will the Fed surprise us with less or more?

Have you been accumulating junior mining stocks? Is this the time or will the \$1450US/oz level be tested this year and take gold stocks lower? There are some solid juniors out there that have a great project, are drilling, and most importantly have closed a multi-million dollar financing recently (some at higher levels). Make your picks very carefully. Bet on solid management.

Have a great week!

PM Pampa Metals

Pampa Metals Fact Sheet

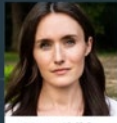
COPPER AND GOLD IN CHILE - AN OUTSTANDING OPPORTUNITY FOR DISCOVERY IN ONE OF THE WORLD'S PREMIER MINING JURISDICTIONS

INFO

INTERESTING INTERVIEWS & ARTICLES



Chat With Traders
Biggest 'n Baddest,
Billionaire Bond Trader:
Bill Gross · Mary Childs



Mining Stock Education
Torq Resources Initiates
Follow-up Drilling at First....

Mining Stock Education.com
Learn. Invest. Profit.

Michael Heatham - Chief Geologist
Shawn Wallace - Executive Chair
Bill Powers

Kitco News: Fed will press
'panic button' by Fall, reset
everything - Frank Holmes on
gold, economy (Pt. 1/2)



Sprott Money
Ask the Expert - July 2022
Lyn Alden



VISUALIZED: BATTERY VS. HYDROGEN FUEL CELL

Lithium Ion BATTERY vs Hydrogen FUEL CELL

Electric Vehicles

BEVs contain a large battery to store electricity.

FCEVs use a hydrogen fuel cell to create electricity. This requires a tank to store hydrogen gas.

Onboard charger
Converts AC electricity from power outlets into DC power.

Fuel tank
Hydrogen gas is stored in a high-pressure tank. Liquid hydrogen can't be used because it requires cryogenic temperatures.

Exhaust
The only waste product of an FCEV is water.

BY: MARCUS LU
READ FULL STORY

THE \$100 TRILLION GLOBAL ECONOMY IN ONE CHART

The \$100 Trillion World Economy

GLOBAL GDP 2022

Despite conflict and looming stagflation, the global economy will hit an impressive new milestone, reaching **\$104 trillion**, according to the latest IMF projections for end of year.

By 2030, **China's GDP** is projected to surpass that of the U.S.

The **U.S.** has been the world's largest economy since 1871.

BY: AVERY KOOP
READ FULL STORY

COUNTRIES WITH THE HIGHEST DEFAULT RISK IN 2022

Countries with the Highest Default Risk in 2022

The Sovereign Debt Vulnerability Ranking gives us insight into which countries are the most likely to default on their debt obligations.

	Sovereign Debt Vulnerability Ranking	Government Bond Yield (Latest)	5Y Credit Default Swap Spread (Latest, Bps)	Interest Expense 2022 (% GDP)	Government Debt 2022 (% GDP)
El Salvador	1	31.8%	3,376	4.9%	82.6%
Ghana	2	17.1%	2,071	7.2%	84.6%
Tunisia	3	32.1%	1,200	3.0%	87.3%
Pakistan	4	16.8%	1,492	4.8%	71.3%
Egypt	5	13.2%	368	8.2%	94.0%
Kenya	6	14.6%	1,134	4.4%	70.3%
Argentina	7	20.7%	4,470	1.7%	74.3%
Ukraine	8	60.4%	10,856	2.9%	49.0%

BY: MARCUS LU
READ FULL STORY

PM

CORPORATE SPONSOR



Snapshot

Copper: One of the greatest growth profiles and demand / supply metrics

Gold: One of most attractive high-value metals

Chile: Elephant country for major economic copper deposits

People: Highly experienced with execution ability & track record

Projects: Portfolio breadth & depth – along proven mineral belts of Chile

Current focus: 4 projects – with 2 additional projects subject to 3rd-party expenditure via JV

Progress: Rapid progress including 2 drilled projects – further drilling planned for 2022

JV Funding: 2 projects subject to 3rd party expenditures – drilling started in January 2022

INVESTOR SUMMARY

FACT SHEET

NEWS RELEASES

Our featured company owns a highly prospective 62,000-hectare portfolio of eight projects for copper and gold located along proven mineral belts in Chile, one of the world's top mining jurisdictions. The Company has a vision to create value for shareholders and all other stakeholders by making a major copper discovery along the prime mineral belts of Chile, using the best geological and technological methods.

The Projects - Current Priorities

Cerro Buenos Aires (7,600 Ha):

- Located south of Spence / Sierra Gorda district
- Recent drilling through post-mineral cover has vectored towards porphyry target

Redondo-Veronica (6,600 Ha):

- Located north of giant La Escondida district
- Recent drilling gives line of sight to 2 deep porphyry targets

Block 4 (6,800 Ha):

- Located south of giant La Escondida district
- Quartz-vein stockwork – coincident with magnetic high – partial post-mineral cover

Block 3 (10,100 Ha):

- Located south of giant La Escondida district
- Post-mineral cover - adjacent to 2 historically drilled porphyry targets – magnetic anomalies

Arrieros (13,700 Ha):

- Large, post-mineral covered property situated between Chuquicamata and Centinela districts
- Magnetic and IP anomalies

Block 2 (3,300 Ha):

- Structural target – pending exploration advances



Projects subject to 3rd Party Expenditures (Austral Gold Ltd)

Morros Blancos (7,300 Ha):

- HS systems – maar-diatremes – vuggy silica
- Drilling started (January 2022)

Cerro Blanco (6,500 Ha):

- Small lithocap outcrop coincident with magnetic high. Extensive post-mineral cover



Symbol: PM

Exchange: CSE

Shares Outstanding: 49.2M

52 Week High: .48

52 Week Low: .17

CSE Close: .19

US Listing: PMMCF

MTNews Start Date: 4-11-2022

PM Chart by TradingView


RESEARCH

RESEARCH AND REPORTS

Use Control + To Zoom

A FEW OF THE TOP DRILL INTERCEPTS WEEK TO: 07/22/2022 @MINERDECK

TOP GOLD INTERCEPTS


BY EXPLORERS ON OUR  WATCHLIST: WEEK TO 07/22

Company	Drill Hole ID	Gold (g/t)	Interval (m)	Grade x Width (g-m)
Desert Gold Ventures	BE22MET01	12.41	45 fr 1	558
Tudor Gold	GS22134	0.83	663 fr 879	550
Blue Star Gold	DD22FLO02	15	17.65 fr 115	265
Anacortes Mining	ATC501	2.11	123 fr 115	260
Karora Resources	BL189003AR	7.8	29.8 fr 128	232
Monarch Mining	SW22010	0.92	225.25 fr 236	207
Nighthawk Gold	C2204	1.38	91.75 fr 152	127
GFG Resources	MTC22023	1.6	70.4 fr 18	113
Endurance Gold	DDH22024	8.41	12 fr 27	101
Cerrado Gold	FSA209	3.93	20.92 fr 123	82

MINER DECK

Disclaimer: (1) This is a curated list of drilling highlights based on our personal watchlist — which itself is subject to rotation. (2) "Interval" = core-length, not true width. (3) "fr" = start of the interval when given or else distance below surface. (4) Only the best intercept per company is shown. (5) We try our best to be accurate but mistakes do happen from time to time. Assume there are mistakes in the above graphic. (6) This is not investment advice. (7) We are not paid a fee by the above companies. (8) We do not own shares of the above companies. (9) Miner Deck retains all rights to this graphic. Do not reproduce it without written permission.

TOP SILVER INTERCEPTS

BY EXPLORERS ON OUR  WATCHLIST: WEEK TO 07/22

Company	Hole ID	Silver (g/t)	Interval (m)	Grade x Width (g-m)
Pan American Silver	D960322	234	295.5 fr 1,153	69,147
Aya Gold & Silver	ZG2255	1,102	14.5 fr 19	15,979
Elores Resources	DSBU10	44.75	349.08 fr 0	15,621
Integra Resources	IDM22204	131.29	102.11 fr 207	13,406
Silver Sands Res.	MRDDH04	720	4.85 fr 58	3,492
Prime Mining	22SME11	129.8	18 fr 224	2,336
Tudor Gold	GS22138	7.57	241.5 fr 136	1,828
Silver Mountain Res.	SMR0322	52	9.2 fr 212	477

MINER DECK

Disclaimer: (1) This is a curated list of drilling highlights based on our personal watchlist — which itself is subject to rotation. (2) "Interval" = core-length, not true width. (3) "fr" = start of the interval when given or else distance below surface. (4) Only the best intercept per company is shown. (5) We try our best to be accurate but mistakes do happen from time to time. Assume there are mistakes in the above graphic. (6) This is not investment advice. (7) We are not paid a fee by the above companies. (8) We do not own shares of the above companies. (9) Miner Deck retains all rights to this graphic. Do not reproduce it without written permission.

 **Morning Coffee**
@CGWM_MrngCoffee

July 22nd, 2022

 **Canaccord Genuity**
Wealth Management

CAD FURY/BZ

EDITOR'S WATCHLIST



Colonial Coal (CAD TSX-V) closed at \$2.34 +.07 (CX2 close) on Friday. That is a .53 move since our last newsletter and it even hit a high of \$2.60! The stock has been trading much stronger lately and has started an uptrend above the 200EMA. Current resistance is the \$2.50 level. Buyers have taken over for now. The stock usually trades under 250,000 shares a day. If the buying volume ramps up and the \$2.50 level is broken we could see an exciting end to the year.

It is nice to have Colonial Coal in my portfolio while I wait for precious metals prices to improve.

AMVEST CAPITAL MAY 11TH COLONIAL COAL WEBINAR

COLONIAL COAL CORPORATE PRESENTATION

CAD Chart by TradingView



Fury Gold Mines (FURY TSX-V) set 52 week lows in July and closed at .55 on Friday. The company raised \$11 Million in April at .80 per share. The company also moved a second drill rig to their Eau Claire project in the James Bay region of Quebec.

Fury's management doesn't seem to have a problem raising millions of dollars for exploration. The downturn in the price of gold is not helping any juniors but it is nice to know they are financed and drilling. Have we seen the 2022 low (.53)?

Benz Mining (BZ TSX-V) is in the same situation as Fury. The company closed at .375 on Friday and has also set a 52 week low in July. The company raised \$10 Million last August at \$1.10 per share. They currently are drilling their Eastmain project which currently hosts a NI 43-101 and JORC (2012) compliant resource of 376,000oz at 7.9g/t gold (Indicated: 236,500oz at 8.2g/t gold, Inferred: 139,300oz at 7.5g/t gold). There are lots of drill results to come.

The bonus with Benz is their Ruby Hill Lithium Project. We are all waiting patiently for the results from their 6 hole drill program at this property. Lithium results are coming soon.

Market Trend News Inc.

#6, 3908 - 97 Street
Edmonton, AB
T6E 6N2

Web: MarketTrendNews.com

Advertising: Kelvin@MarketTrendNews.com

The Editor: Editor@MarketTrendNews.com

Market Trend News has been featuring small cap companies for 29 years. The newsletter started out as a print publication and is now distributed over the web.

We feature micro cap and small cap companies that want to spread the word about their company and potential.

Our featured companies come from a wide variety of sectors such as mining, oil and gas, technology, biotech and cannabis.

The Corporate Sponsors pages (featured companies) are companies who have paid for a social media advertising package with Market Trend News Inc. Market Trend News Inc may have a stock position in the company being featured.

The Editor's Watchlist section contains featured companies that the Editor has positions in or is thinking of buying positions in. Consider it a swing trader's blog and in no way a recommendation to buy or sell securities. He is not an advisor. Please do your own research and consult a licensed advisor before taking action.

You are responsible for your trades.

Subscribe

S ubscribe

Market Trend News Subscription

Thanks to our corporate sponsors, we are able to cover our costs and offer our newsletter as a free subscription to the reader.

Platinum Subscription

There are two levels of subscriptions. If you are seeing the Platinum logo in the top left hand corner of the first page, then you are Platinum Subscribed. The benefits are that you get the newsletter first. We are also working on other supplementary content that will be offered to Platinum Subscribers first and maybe exclusively.

If you are NOT Platinum subscribed, you can upgrade by clicking on the Subscribe link above or you can remain on the regular list.

Unsubscribing

We do not want to send to people who are not interested. Please use the single click removal link at the bottom of the email that was sent to you. You will be instantly removed.

L inks

Tradingview

Tradingview is an excellent online charting platform as well as a social network for traders and investors to exchange ideas.

G lossary

Diamond Hands

Slang term for an investor who is ready to hold a position for the end goal, despite the potential risk, headwinds and losses.

Doji Candle

Doji Candles look like a cross because the financial instrument's open and close for the time period are close to equal.

Fibonacci Retracement (Fib)

These are levels in the chart where support and resistance are likely to occur. The levels are 23.6%, 38.2%, 61.8%, and 78.6%. 50% is often added but is not an official level. The levels are calculated from two points chosen by the user, usually an extreme low and an extreme high.

FLEM & DHEM

Fixed Loop Electromagnetic and Down Hole Electromagnetic Surveys

FOMC

The Federal Open Market Committee consists of 12 members and is the U.S. Fed's monetary policy making body. It is responsible for formulation of a policy designed to promote stable prices and economic growth.

FOMO

Fear Of Missing Out

Naked Shorting

It is the illegal practice of shorting stock that is not borrowed.

Nonfarm Payrolls

Is an official statistic released by the U.S. department of labor, usually on the first Friday of the month. It is a measure of the number of workers in the U.S. excluding farm workers and those employed in private households or non-profit organisations.

Shorting

Borrowing stock, selling it in the market to hopefully buy it back at a lower price, making profit from the difference in price, and then returning the borrowed stock.

Short Squeeze

When a company's stock starts to quickly rise because people shorting the stock are trying to cover their losing positions to prevent further loss.

YOLO

You Only Live Once